

Datasheet



Mouse mAb to **Human IgM**
Clone **EBS-huM**
Isotype **IgG1-κ**

Source

A BALB/c mouse was immunized with purified human immunoglobulins.
Fusion partner: Sp2/0.

Specifications

EBS-huM reacts specifically with human IgM and not with other types of immunoglobulins.

Species reactivity

Positive: human.

Applications

EBS-huM is excellent for ELISA (quantification of IgM) and as basis for anti-human IgM conjugates.

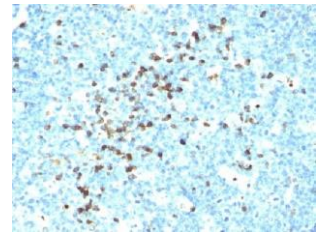


Figure 1: Human tonsil stained for human IgM (frozen)

ELISA	Flow cytometry	Frozen sections
+	+	+

Format

Produced in tissue culture, contains no host Ig. Antibodies are affinity purified and presented in PBS with 0,02 % sodium azide.

Stored at 4°C- 8°C, shelf life is at least 24 months after purchase.

Dilution advice

- ELISA (solid phase: 0,1-100 µg/ml; tracer: 0,001-100 µg/ml for 30 min at RT).
- Flow cytometry (0.5-1.0 µg/million cells in 0.1 ml).
- Immunohistology (1-2 µg/ml for 30 min at RT).

Positive control

Human B-cells.

References

- Maruyama S, et. Al, *J. Immunol* **135(1)**: 192-9 (1985).
- Rudich SM, et. al, *J Exp Med* **162(4)**: 1236-55 (1985).