

Datasheet



Mouse mAb to **CD176/TF Antigen**
Clone **EBS-CD-050**
Isotype **IgM-κ**

Source

A BALB/c mouse was immunized with neuraminidase-treated human red blood cells.
Fusion partner: X63-AG8.653.

Specifications

EBS-CD-050 specifically recognizes the carbohydrate epitope Thomsen-Friedenreich β , (asialo-glycophorin; Gal β 1-3GalNAc β 1). In IHC, it shows no cross-reactivity with sialylated glycophorin. Human cells normally do not carry Thomsen-Friedenreich antigen. Only after malignant transformation the antigen may appear and is thus considered a pan-carcinoma marker.

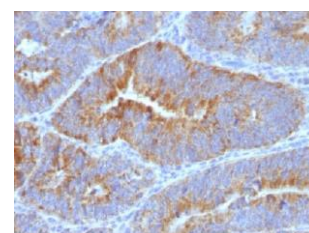


Figure 1: Human colonic cancer stained with EBS-CD-050 (paraffin).

Species reactivity

Positive: human, mouse, rat.

Applications

EBS-CD-050 can be applied for the detection of cells with TF β and is especially applicable for sensitive determination of neuraminidases. EBS-CD-050 can be used on frozen and paraffin-fixed tissue sections and is able to agglutinate desialylated red blood cells.

ELISA	Flow cytometry	Frozen sections	Immunofluorescence	Paraffin sections
+	+	+	+	+

Format

Produced in tissue culture, contains no host Ig. Antibodies are affinity purified and presented in PBS with 0,02% sodium azide.

Stored at 4°C-8°C, shelf life is at least 24 months after purchase.

Dilution advice

- ELISA (solid phase: not known; tracer: 0,001-100 μ g/ml for 30 min at RT).
- Flow cytometry (0,5-1,0 μ g/million cells in 0,1 ml).
- Immunofluorescence (0,5-1,0 μ g/ml).
- Immunohistology (1-2 μ g/ml for 30 min at RT).

Positive control

KG1 cells or human colorectal carcinoma tissues.

Datasheet



References

- Karsten U. et al. *Hybridoma* **14(1)**: 37-44 (1995).
- CD176 Workshop panel report. In: Mason D et al, editors. *Leucocyte Typing VII*. Oxford, UK: Oxford University Press (2002).
- Henderson G. et al. *Glycobiology* **21(10)**: 1277-1289 (2011).