

Datasheet



Mouse mAb to **CD1a**
Clone **CB-T6**
Isotype **IgG1-κ**

Source

A BALB/c mouse was immunized with Jurkat cells.
Fusion partner: NS-0.

Specifications

CB-T6 specifically reacts with CD1a, an MHC like transmembrane glycoprotein of 49 kDa, that presents lipid molecules and is non-covalently associated with beta2-microglobulin. The antigen is strongly expressed on cortical thymocytes and dendritic cells and disappears at later stages of maturation.

Species reactivity

Positive: Human, Mouse.

Applications

CB-T6 can be used for immunohistochemistry, flow cytometry and immunoprecipitation.

Flow cytometry	Frozen sections	Immunoprecipitation	Paraffin sections
+	+	+	—

Format

Produced in tissue culture, contains no host Ig. Antibodies are affinity purified and presented in PBS with 0,02% sodium azide.

Stored at 4°C-8°C, shelf life is at least 24 months after purchase.

Dilution advice

- Flow cytometry (0,5-1,0 µg/million cells in 0,1 ml).
- Immunohistology (1-2 µg/ml for 330 min at RT; an appropriate antigen retrieval method for staining of formalin-fixed tissue has not been established to date).
- Immunoprecipitation (1-2 µg per 100-500 µg of total cell lysate protein/1 ml of anti-mouse coated Sepharose-4B suspension).

Positive control

Human thymus, lymphocytes.

References

- Crispe N. et al. *Immunol. Today* **17**: 522-525 (1996).
- Yakimchuk et al. *Eur J Immunol.* **41(3)**: 694–705 (2011). doi:10.1002/eji.201040808.

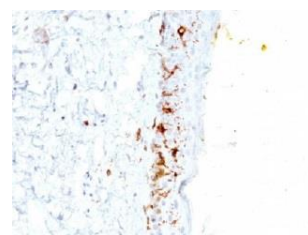


Figure 1: Human skin stained for CD1a (DAB).