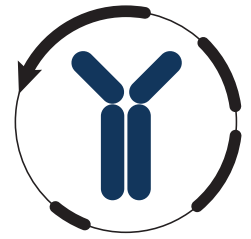


Datasheet



Mouse mAb to **CD1a**
Clone **EBS-CD-001**
Isotype **IgG2a-κ**

Source

A BALB/c mouse was immunized with human thymocytes.
Fusion partner: Sp2/0.

Specifications

EBS-CD-001 reacts with CD1a an MHC I like glycoprotein of 49 KDa, that presents lipid molecules to the immune system.

Species reactivity

Positive: human.

Applications

EBS-CD-001 can be used for immunohistochemistry, flow cytometry and immunoprecipitation.

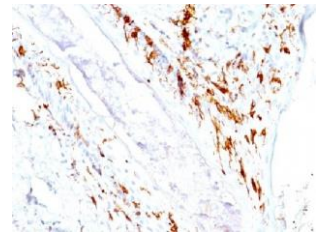


Figure 1: Langerhans cells in human skin stained for CD1a (paraffin).

Flow cytometry	Frozen sections	Paraffin sections	Immunoprecipitation
+	+	Citrate	+

Format

Produced in tissue culture, contains no host Ig. Antibodies are affinity purified and presented in PBS with 0.02% sodium azide.

Stored at 4°C-8°C, shelf life is at least 24 months after purchase.

Dilution advice

- Flow cytometry (0.5-1.0 µg/million cells in 0.1 ml).
- immunohistology (1.0-2.0 µg/ml for 30 min at RT; staining of formalin-fixed tissues requires boiling tissue sections in 10 mM citrate buffer, pH 6.0, for 10-20 min followed by cooling at RT for 20 min).
- Immunoprecipitation (1.0-2.0 µg per 100-500 µg of total cell lysate protein/1ml of anti-mouse coated sepharose-4B suspension).

Positive control

Human thymus, lymphocytes.

Datasheet



References

- Van de Rijn et al. *Human immunol.* **6**: 13 (1983).
- Van de Rijn et al. *J. immunol.* **131**: 851 (1983).
- Lerch PG et al. *Hum Immunol* **6(1)**: 13-30 (1983).
- Knapp W. et al. (eds) *Leukocyte Typing IV*, p251-263, Oxford University Press, Oxford, (1989).
- Khalili-Shirazi A, et al. *J Neurol Sci* **158(2)**: 154-163 (1998).
- Maher JK and Kronenberg M. *Curr Opin Immunol*, **9(4)**: 456-461 (1997).
- Blumberg RS et al. *Immunol Rev* **147**: 5-29 (1995).
- Salamone MC et al. *Dis Markers* **8(5)**: 275-281 (1990).