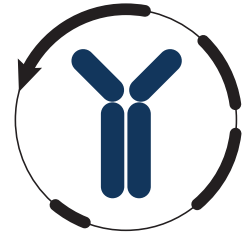


Datasheet



Mouse mAb to **CD1b**
Clone **RIV12**
Isotype **IgG1-κ**

Source

A BALB/c mouse was immunized with human peripheral lymphocytes.
Fusion partner: P3-X63-Ag8.653.

Specifications

RIV12 reacts with CD1b, a 44KDa type 1 glycoprotein associated with beta2-microglobulin. It is expressed on dendritic cells, Langerhans cells, thymocytes and T acute lymphoblastic leukemia cells. CD1, type 1 membrane protein, has structural similarity to the MHC class 1 molecule and has been shown to present lipid antigens for recognition by T lymphocytes. CD1b is also expressed in Langerhans interdigitating cells.

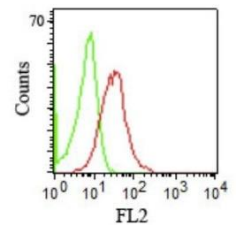


Figure 1: Human PBL stained for RIV12 (FITC).

Species reactivity

Positive: human.

Applications

Characterization of leukemia and lymphoma.

ELISA	Flow cytometry	Frozen sections	Immunofluorescence	Paraffin sections
+	+	+	+	-

Format

Produced in tissue culture, contains no host Ig. Antibodies are affinity purified and presented in PBS with 0,02% sodium azide.

Stored at 4°C-8°C, shelf life is at least 24 months after purchase.

Dilution advice

- ELISA (solid phase: not known; tracer: 0.001-100 µg/ml for 30 min at RT).
- Flow cytometry (0.5-1.0 µg/million cells in 0.1 ml).
- Immunofluorescence (0.5-1.0 µg/ml).
- Immunohistology (1.0-2.0 µg/ml for 30 min at RT; an appropriate antigen retrieval method for staining of formalin-fixed tissue has not been established to date).

Positive control

Molt-4, HD Mar cells, human thymus.

References

- Leerling et al, RIV Mededelingen (1985).