

Datasheet



Mouse mAb to **CD23**
Clone **EBS-CD-016**
Isotype **IgG1-κ**

Source

A BALB/c mouse was immunized with human PBL.
Fusion partner: Sp2/0.

Specifications

EBS-CD-016 reacts with CD23, which is Fc epsilon Receptor II, which plays a role in the differentiation of B-cells and is B-cell specific.

Species reactivity

Positive: human.

Applications

EBS-CD-016 can be used as B-cell marker and for classifying leukemia and lymphoma.

Flow cytometry	Frozen sections	Immunofluorescence	Paraffin sections
+	+	+	—

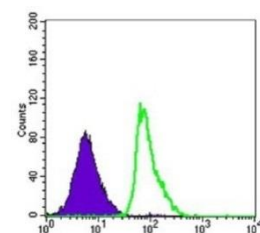


Figure 1: Raji cells stained for CD23 (FACS)

Format

Produced in tissue culture, contains no host Ig. Antibodies are affinity purified and presented in PBS with 0,02% sodium azide.

Stored at 4°C-8°C, shelf life is at least 24 months after purchase.

Dilution advice

- Flow cytometry (0,5-1,0 µg/million cells in 0,1 ml).
- Immunofluorescence (0,5-1,0 µg/ml).
- Immunohistology (1-2 µg/ml for 30 min at RT; an appropriate antigen retrieval method for staining formalin-fixed tissues has not been established to date).

Positive control

Human PBL or tonsil.

References

- Johnson GD, et al, *Clin Exp Immuno*. **64(1)**: 205-13 (1986).
- Bonnefoy JY, et al, *J Immunol*. **138**: 2970 (1987).