

Datasheet



Mouse mAb to **CD235a
(Glycophorin A)**
Clone **EBS-CD-060**
Isotype **IgM-κ**

Source

A BALB/c mouse was immunized with human erythrocytes, treated with neuraminidase (V.cholerae).
Fusion partner: X63.Ag8.653.

Specifications

EBS-CD-060 reacts with a peptide epitope on the extracellular domain of human Glycophorin A, a 39 kDa sialoglycoprotein, present on red cells and erythroid precursor cells. Glycophorin A is the carrier of blood group M and N specificities, while Glycophorin B carries S and U specificities. Providing a mucin like coat, Glycophorin may play a role in preventing red cell aggregation in the circulation. Glycophorin also acts as receptors for Sendai and Parvovirus.

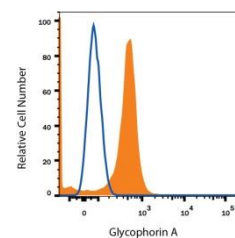


Figure 1: TF-1 cells stained for Glycophorin A (FACS).

Species reactivity

Positive: human.
Negative: cow.

Applications

Blood groups, haematology and virology.

Flow cytometry	Frozen sections	Immunofluorescence
+	+	+

Format

Produced in tissue culture, contains no host Ig. Antibodies are affinity purified and presented in PBS with 0,02% sodium azide.

Stored at 4°C-8°C, shelf life is at least 24 months after purchase.

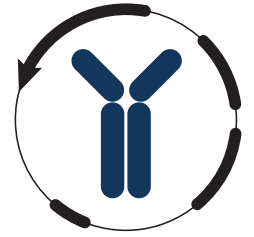
Dilution advice

- Flow cytometry (0,5-1,0 µg/million cells in 0,1 ml).
- Immunofluorescence (0,5-1,0 µg/ml).
- Immunohistology (1-2 µg/ml for 30 min at RT; an appropriate antigen retrieval method for staining of formalin-fixed tissues has not been established to date).

Positive control

Erythrocytes.

Datasheet



References

- Cartron JP et al, *Transfus Med Rev* 6(2): 63-92 (1992).
- Gahmberg CG et al. *Rev Fr Transfus Immunohematol* 24(1): 53-73 (1981).
- Wybenga LE et al. *Biochemistry*,35(29): 9513-8 (1996).
- Rahuel C et al. *J Biol Chem* 269(52): 32752-8 (1994).
- Thacker TC et al. *J Gen Virol* 79: 2163-9 (1998).