

Datasheet



Mouse mAb to **CD26**
Clone **202-36**
Isotype **IgG2b-κ**

Source

A BALB/c mouse was immunized with a T-cell clone.
Fusion partner: NS-1.

Specifications

202-36 Reacts with human CD26 (Dipeptidyl peptidase IV), a 110 kDa protein which occurs in the cell membrane of T-lymphocyte and is upregulated after activation. CD26 is also present on endothelial cells and also expressed on activated B-cells and natural killer cells and abundantly on epithelia. CD26 is implicated in a variety of biological functions including T-cell activation, cell adhesion with extracellular matrix such as fibronectin or collagens, and in HIV infection. Cross-linking of CD26 using this antibody dramatically enhances the anti-CD3-induced IL-2 production. In Western blotting, this mAb reacts with only glycosylated CD26, but not with deglycosylated forms. It does not prevent ADA binding to CD26. The mAb was clustered at the VIth WLDA.

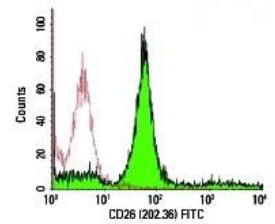


Figure 1: Human PBL stained with 202-36 (FACS).

Species reactivity

Positive: Human, Rat.
Negative: Pig, Sheep.

Applications

202-36 Can be used in frozen sections, flow cytometry, immunoblotting and immunofluorescence.

Flow cytometry	Frozen sections	Immunofluorescence	Paraffin sections	Western blot
+	+	+	-	+

Format

Produced in tissue culture, contains no host Ig. Antibodies are affinity purified and presented in PBS with 0,02% sodium azide.

Stored at 4°C-8°C, shelf life is at least 24 months after purchase.

Dilution advice

- Flow cytometry (0,5-1,0 µg/million cells in 0,1 ml).
- Immunoblotting (1-2 µg/ml).
- Immunofluorescence (0,5-1,0 µg/ml).
- Immunohistology (1-2 µg/ml for 30 min at RT; an appropriate antigen retrieval method for staining of formalin-fixed tissues has not been established to date).

Positive control

Human PBL or tonsil.

Datasheet



References

- Kishimoto et al., Leucocyte typing VI. Gariand Publishing. (1997).