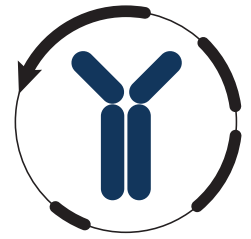


# Datasheet



Mouse mAb to **CD28**  
Clone **204-12**  
Isotype **IgG2b-κ**

## Source

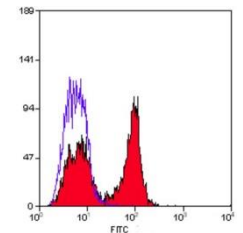
A BALB/c mouse was immunized with human leucocytes.  
Fusion partner: NS-1.

## Specifications

CD28, a glycoprotein of 44-88 kDa, is the critical T-cell co-stimulatory receptor which provides to the cell the important second activation signal by binding CD80 and CD86 that are expressed by antigen presenting cells. While 204-12 remained unclustered at the VI<sup>th</sup> International Workshop on human leukocyte differentiation antigens, the antibody has later been verified as CD28 specific.

## Species reactivity

Positive: Cow, Human, Mouse, Pig, Sheep  
Negative: Cat, Chicken, Dog, Earthworm, Ferret, Rabbit, Rat, Xenopus



**Figure 1:** Human PBL stained for CD28 (FACS).

## Applications

204-12 can be applied for specific detection of CD28 on T-lymphocytes in peripheral blood and in frozen tissue sections and in extension for the characterization of immunodeficiency, leukemias and lymphomas. It can also be used for functional studies.

Flow cytometry	Frozen sections	Functional studies	Immunofluorescence
+	+	+	+

## Format

Produced in tissue culture, contains no host Ig. Antibodies are affinity purified and presented in PBS with 0,02% sodium azide.

Stored at 4°C-8°C, shelf life is at least 24 months after purchase.

## Dilution advice

- Flow cytometry (0,5-1,0 µg/million cells in 0,1 ml).
- Functional studies (0,02-2,0 µg/ml without azide).
- Immunofluorescence (0,5-1,0 µg/ml).
- Immunohistology (1-2 µg/ml for 30-60 min at RT; for staining of formalin-fixed tissues no suitable antigen retrieval method is known to date).

## Positive control

Jurkat cells or human lymph nodes and tonsils, epidermis: Langerhans cells.

## References

# Datasheet



- Kishimoto T. et al., eds. Leukocyte Typing VI, Garland Publishing, Inc, New York and London, (1997).