

# Datasheet



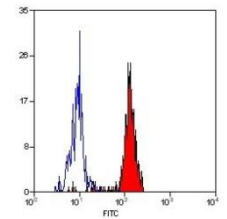
Mouse mAb to **CD33/SIGLEC3**  
Clone **CD33-22**  
Isotype **IgG1-κ**

## Source

A BALB/c mouse was immunized with stimulated human AML cells.  
Fusion partner: NS-1.

## Specifications

CD33 is a 67 kDa glycoprotein of the sialic acid-binding immunoglobulin-like lectin (SIGLEC) family, displaying the immune-receptor tyrosine-based inhibitory motif (ITIM), able of recruiting protein tyrosine phosphatases SHP-1 and SHP-2 to signal assemblies. ITIMs are also used for ubiquitin-mediated removal of the receptor from the cell surface. CD33 is expressed on cells of myelomonocytic lineage, binds sialic acid residues in N- and O-glycans on cell surfaces, and is a therapeutic target for acute myeloid leukemia. CD33 is expressed on myeloid progenitors, monocytes, granulocytes, dendritic cells and mast cells. It is absent on platelets, lymphocytes, erythrocytes and hematopoietic stem cells.



**Figure 1:** Human PBL stained for CD33 (FACS).

## Species reactivity

Positive: human.

## Applications

Demonstration of CD33 in frozen sections, flow cytometry and immunofluorescence.

Flow cytometry	Frozen sections	Immunofluorescence
+	+	+

## Format

Produced in tissue culture, contains no host Ig. Antibodies are affinity purified and presented in PBS with 0,02% sodium azide.

Stored at 4°C-8°C, shelf life is at least 24 months after purchase.

## Dilution advice

- Flow cytometry (1-2 µg/million cells in 0,1 ml for 30 min, at 4°C).
- Immunofluorescence (1-2 µg/ml).
- Immunohistology (1-2 µg/ml for 30 min at RT; no antigen retrieval procedure is known to date for formalin-fixed tissues).

## Positive control

Human dendritic and mast cells. Human lymph node and tonsil.

# Datasheet



## References

- Knapp W. et al. Leucocyte typing IV, p. 408- 411 and p. 1080, Oxford University Press, Oxford (1989).
- Favaloro EJ et al, Dis Markers 5(4):215-25 (1987).
- Favaloro EJ et al, Br J Haematol 69(2):163-71 (1988).