

# Datasheet



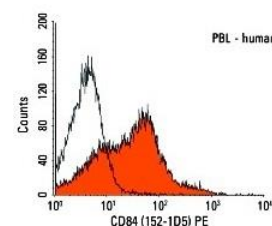
Mouse mAb to **CD84**  
Clone **152-1D5**  
Isotype **IgG1-κ**

## Source

A BALB/c mouse was immunized with MLR stimulated lymphocytes.  
Fusion partner: NS-1.

## Specifications

152-1D5 reacts with human CD84 (Mw 74 kDa). CD84 is expressed on mature B-cells and on B-cell lines but not on plasma cell lines. Immunohistochemistry demonstrated that it strongly stains tissue macrophages. It is also expressed on platelets and at low levels on blood T-cells. It is a highly N-glycosylated protein and belongs to immunoglobulin superfamily. It may play a role in leukocyte activation but cellular expression does not significantly increase after activation. 152-1D5 was clustered at the V<sup>th</sup> WLDA.



**Figure 1:** Human PBL stained with 152-1D5 (FACS).

## Species reactivity

Positive: human.

## Applications

152-1D5 can be used for frozen sections, immunofluorescence, flow cytometry and immunoblotting.

Flow cytometry	Frozen sections	Immunofluorescence	Immunoprecipitation	Western blot
+	+	+	+	+

## Format

Produced in tissue culture, contains no host Ig. Antibodies are affinity purified and presented in PBS with 0,02% sodium azide.

Stored at 4°C-8°C, shelf life is at least 24 months after purchase.

## Dilution advice

- Flow cytometry (1-2 µg/million cells in 0,1 ml, at 4°C).
- Immunofluorescence (1-2 µg/ml).
- Immunoprecipitation (1-2 µg per 100-500 µg of total cell lysate protein/1ml of anti-mouse coated Sepharose-4B suspension).
- Immunohistology (1-2 µg/ml for 30-60 min at RT; for staining of formalin-fixed tissues no suitable antigen retrieval method is known to date).

## Positive control

Raji, HL60, THP-1, HMC-1, HEL and NAMALWA cells. Human platelets, macrophages and human tonsil.

# Datasheet



## References

- 1.Schlossman SF et al. (eds) Leukocyte Typing V. p.699-700, Oxford University Press, Oxford, (1995).
- De la Fuente, M, et al, Blood 90(6): 2398-2405 (1997).