

Datasheet



Mouse mAb to **CD8a**
Clone **EBS-CD-009**
Isotype **IgG1-κ**

Source

A BALB/c mouse was immunized with human PBL.
Fusion partner: NS-1.

Specifications

EBS-CD-009 recognizes a protein of 32 kDa, identified as CD8a. The CD8 molecule consists of α and β -chain, which are disulphide-linked into heterodimers or homodimers. CD8 is expressed on a T-cell subset (cytotoxic/suppressor T-cells), thymocytes and NK-cells. The majority of CD8+ T-cells express CD8 as heterodimer. Some subpopulation of CD8+ T-cells as well as NK-cells may express homodimer. CD8 functions as a co-receptor in concert with TCR for binding the MHC class I/peptide complex. HIV-2 envelope glycoprotein binds CD8 α -chain but not β -chain.

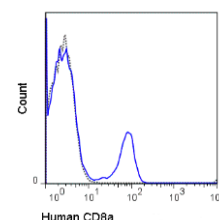


Figure 1: Human PBLs stained for CD8a (FACS).

Species reactivity

Positive: human.

Applications

Characterization of leukemia and lymphoma.

Flow cytometry	Frozen sections	Immunofluorescence	Paraffin sections
+	+	+	—

Format

Produced in tissue culture, contains no host Ig. Antibodies are affinity purified and presented PBS with 0,02% sodium azide.

Stored at 4°C-8°C, shelf life is at least 24 months after purchase.

Dilution advice

- Flow cytometry (0,5-1,0 µg/million cells in 0,1ml).
- Immunofluorescence (0,5-1,0 µg/ml).
- Immunohistology (1-2 µg/ml for 30 min at RT; an appropriate antigen retrieval method for staining of formalin-fixed tissues has not been established to date).

Positive control

HuT78 or hPBL. Tonsil.

Datasheet



References

- Knapp W. et. al. Leukocyte Typing IV, p342-343, Oxford University Press, (1989)
- Parnes JR, *Semin Immunol* **6**: 221-229 (1994).
- Delon J. et al. *Immunity* **9(4)**: 467-73 (1998).
- Akimoto H, et al. *Immunology* **95(2)**: 214-218 (1998).
- Leahy DJ. *Transplantation* **45(4)**: 677-682 (1998).