

Datasheet



Rat mAb to **CD8a (mouse)**
Clone **IBL-3/25**
Isotype **IgG-κ**

Source

A Wistar rat was immunized with mouse lymph node cells.
Fusion partner: SP-2/0.

Specifications

IBL-3/25 is directed against the α -chain of CD8. The CD8 complex consists of a disulphide-linked α/β heterodimer with a MW of 30 kDa or an α/α homodimer with a MW of 32 kDa. The CD8 molecule binds to HLA class I molecules during interaction of CD8⁺ T-cells with antigen-presenting cells or with target cells. CD8⁺ T-cells include most of the cytotoxic T-cells.

Species reactivity

Positive: mouse.

Applications

Mouse models of Leukemia and Lymphoma.

Flow cytometry	Frozen sections	Immunofluorescence	Paraffin sections
+	+	+	-

Format

Produced in tissue culture, contains no host Ig. Antibodies are affinity purified and presented in PBS with 0,02% sodium azide.
Stored at 4°C-8°C, shelf life is at least 24 months after purchase.

Dilution advice

- Flow cytometry (0,5-1,0 µg/million cells in 0,1 ml).
- Immunofluorescence (0,5-1,0 µg/ml).
- Immunohistology (1-2 µg/ml for 30 min at RT; an appropriate antigen retrieval method for staining of formalin-fixed tissues has not been established to date).

Positive control

Mouse PBL or lymph node.

References

- Knapp W. et al. Leukocyte Typing IV, p342-343, Oxford University Press, (1989).
- Parnes JR *Semin Immunol* **6**: 221-229 (1994).
- Delon J. et al. *Immunity* **9(4)**: 467-73 (1998).
- Akimoto H, et al. *Immunology* **95(2)**: 214-218 (1998).
- Leahy DJ. *Transplantation* **45(4)**: 677-682 (1998).

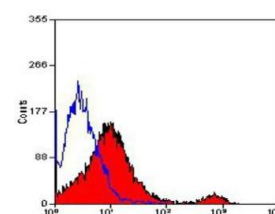


Figure 1: Mouse spleen cells stained for CD8a (FACS).