

Datasheet



Mouse mAb to **CD8a**
Clone **RIV11**
Isotype **IgG1-κ**

Source

A BALB/c mouse was immunized with human PBL.
Fusion partner: P3-X63-Ag8.653.

Specifications

RIV11 recognizes a protein of 32 kDa, identified as CD8a. The CD8 molecule consists of α and β chains, which are disulphide-linked into heterodimers or homodimers. CD8 is expressed on a T-cell subset (cytotoxic/suppressor T-cells), thymocytes and NK-cells. The majority of CD8⁺ T-cells express CD8 as heterodimer. Some subpopulations of CD8⁺ T-cells as well NK-cells may express homodimer. CD8 functions as a co-receptor in concert with TCR for binding the MHC class I/peptide complex. HIV-2 envelope glycoprotein binds CD8 α chain but not CD8 β chain.

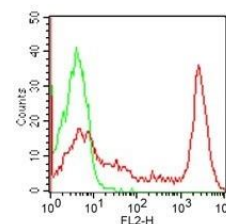


Figure 1: Human PBMCs stained for CD8a (FACS).

Species reactivity

Positive: human.

Applications

Characterization of leukemia and lymphoma.

ELISA	Flow cytometry	Frozen sections	Immunofluorescence	Paraffin sections
+	+	+	+	-

Format

Produced in tissue culture, contains no host Ig. Antibodies are affinity purified and presented in PBS with 0,02% sodium azide.

Stored at 4°C-8°C, shelf life is at least 24 months after purchase.

Dilution advice

- ELISA (solid phase: not known; tracer: 0,001-100 $\mu\text{g/ml}$ for 30 min at RT).
- Flow cytometry (0,5-1,0 $\mu\text{g/million}$ cells in 0,1 ml).
- Immunofluorescence (0,5-1,0 $\mu\text{g/ml}$).
- Immunohistology (1-2 $\mu\text{g/ml}$ for 30 min at RT; an appropriate antigen retrieval method for staining of formalin-fixed tissues has not been established to date).

Positive control

HuT78 or hPBL, tonsil.

References

- Leerling et al, Communications RIV (1985).
- Jonker et al, *Transplantation* **45**: 677 (1988).