

# Datasheet



Mouse mAb to **Haemoglobin**  
Clone **EBS-O-148**  
Isotype **IgG3**

## Source

A BALB/c mouse was immunized with purified human haemoglobin.

## Specifications

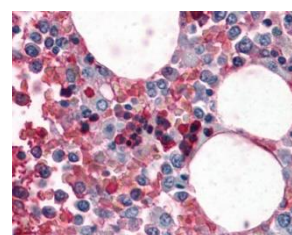
EBS-O-148 reacts specifically with human haemoglobin.

## Species reactivity

Positive: human.

## Applications

EBS-O-048 can be used in ELISA, frozen sections, FACS and Western blot, however no method is known to date to retrieve the antigen in paraffin sections. Anti-hemoglobin antibodies can be used in diagnosis of anemias and as tumor marker in stool.



**Figure 1:** Human blood stained for hemoglobin (AEC)

ELISA	Flow cytometry	Frozen sections	Immunofluorescence	Paraffin sections
+	+	+	+	-

## Format

Produced in tissue culture, contains no host Ig. Antibodies are affinity purified and presented in PBS with 0,02 % sodium azide.

Stored at 4°C- 8°C, shelf life is at least 24 months after purchase.

## Dilution advice

- ELISA (solid phase: not known; tracer: 0,001-100ug/ml for 30 min at RT).
- Flow Cytometry (1-2 µg/million cells in 0.1ml, fix cells in 4% PFA for 10 min, at 4°C, permeabilize with 0,2% saponin or digitonin for 15 min, at 4°C).
- Immunofluorescence (1-2 µg/ml).
- Immunohistology ( 2-4 µg/ml for 30 min at RT).

## Positive control

Human red cells.

## References

- This antibody has not been published.