

# Datasheet



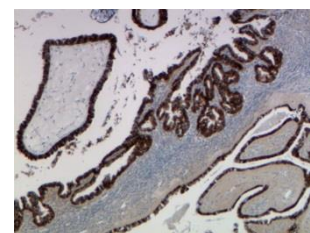
Mouse mAb to **CRASH**  
Clone **4D11**  
Isotype **IgG1-κ**

## Source

A BALB/c mouse was immunized with CRASH recombinant protein and synthetic peptide.  
Fusion partner: SP2/0.

## Specifications

4D11 reacts with CRASH, a 308 AA glycoprotein, sharing 32% homology with human asparaginase and identical to Asparaginase-Like Protein (ALP) found in rat sperm. CRASH is found in a variety of tumors but only occasionally in normal tissues. Especially ovarian cancers are highly positive. CRASH is further found in brain tumors, some colonic cancers, some lung cancers, some prostate cancers, uterine cancers, some breast cancers and some thyroid cancers. It was not found in serum. In Western blot 3 bands are demonstrated of 45 kDa, 28 kDa and 15 kDa.



**Figure 1:** Ovarian cancer stained for CRASH (frozen)

## Species reactivity

Positive: human.

## Applications

4D11 can be used on frozen sections, ELISA and Western blot.

ELISA	Frozen sections	Western blot
+	+	+

## Format

Produced in tissue culture, contains no host Ig. Antibodies are affinity purified and presented in PBS with 0,02% sodium azide.

Stored at 4°C-8°C, shelf life is at least 24 months after purchase.

## Dilution advice

- ELISA (solid phase: 0,1-100 µg/ml; tracer: 0,001-100 µg/ml for 30 min at RT).
- Immunoblotting (1-2 µg/ml).
- Immunohistology (1-2 µg/ml for 30 min at RT).

## Positive control

Ovarian cancer, KM22 breast cancer cells.

## References

- Weidle, UH et al, Anticancer Res. 29(4): 951-63 (2009).