

Datasheet



Mouse mAb to **BLA36**
Clone **EBS-T-002**
Isotype **IgG1-κ**

Source

A BALB/c mouse was immunized with human BLA36 recombinant protein.
Fusion partner: Sp2/0.

Specifications

BLA36 is a developmentally regulated 36 kDa antigen expressed on the plasma membrane of B lymphocytes, Reed-Sternberg, and mononuclear Hodgkin's cells. It also gives strong staining of B cell lymphomas including follicular center cell lymphomas (large and small cell types), mantle zone lymphomas, and immunoblastic lymphomas.

Species reactivity

Positive: human.

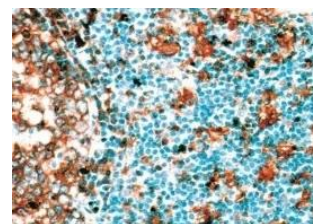


Figure 1: Lymphoma stained for BLA36

Applications

EBS-T-002 can be used to distinguish Reed-Sternberg cells and some B-cell lymphomas from other malignant cells.

Frozen sections
+

Format

Produced in tissue culture, contains no host Ig. Antibodies are affinity purified and presented in PBS with 0,02% sodium azide.

Stored at 4°C-8°C, shelf life is at least 24 months after purchase.

Dilution advice

- Immunohistology (1-2 µg/ml for 30 min at RT).

Positive control

Hodgkin's lymphoma.

References

- This antibody has not been published.