

Datasheet



Mouse mAb to **MALT1**
Clone **EBS-T-007**
Isotype **IgG1-κ**

Source

A BALB/c mouse was immunized with human MALT1 recombinant protein.
Fusion partner: Sp2/0.

Specifications

EBS-T-007 reacts with paracaspase MALT1, crucial for B- and T-cell activation/proliferation and activation of transcription factor NF-κB. It has an N-terminal death domain, two central immunoglobulin-like domains involved in the binding to the B-cell lymphoma 10 (BCL10) protein and a caspase-like domain. MALT1 and BCL10, can both be found translocated in MALT lymphoma. In such cases either BCL10 or MALT1 or both are highly expressed, depending on the site of translocation. Normal cells and MALT lymphomas lacking translocations exhibit much lower levels of expression.

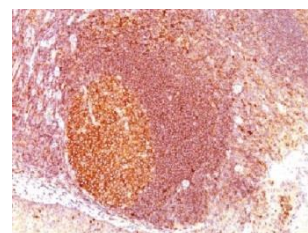


Figure 1: Human tonsil stained with EBS-T-007 (paraffin)

Species reactivity

Positive: human.

Applications

EBS-T-001 is excellent for immunohistochemistry on paraffin sections and for Western blot. Other applications not tested.

Frozen sections	Paraffin sections	Western blot
+	Citrate	+

Format

Produced in tissue culture, contains no host Ig. Antibodies are affinity purified and presented in PBS with 0,02 % sodium azide.

Stored at 4°C- 8°C, shelf life is at least 24 months after purchase.

Dilution advice

- Immunoblotting (1-2 µg/ml).
- Immunohistology (formalin-fixed: 1-2 µg/ml for 30 min at RT; requires boiling tissue sections in 10mM citrate buffer, pH 6.0, for 10-20 min. followed by cooling at RT for 20 min).

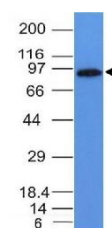


Figure 2: W. blot of Daudi cell lysate stained with EBS-T-007

Positive control

HepG2 cells or lymphoma.

References

- Ye H, et al, *Am J Pathol* **157**: 1147-54 (2000).