

Datasheet



Mouse mAb to **TGF-alpha**
Clone **1E8-G6**
Isotype **IgM-κ**

Source

A BALB/c mouse was immunized with synthetic TGF-alpha 34-43 decapeptide linked carrier. Fusion partner Sp2/0-Ag14.

Specifications

1E8-G6 reacts with TGF-alpha and shows no cross-reaction with EGF and the neuropeptide synenkephalin. 1E8-G6 is completely blocked by the peptide used for immunization. TGF-alpha (aa50) is a growth factor with 33% homology to EGF, binds to EGFR, activates tyrosine phosphorylation of the receptor, and stimulates cell proliferation. It plays a role in tumor initiation by inducing the reversible transformed phenotype. In sections both cytoplasm and cell membranes are stained.

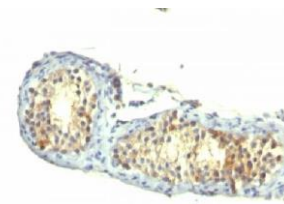


Figure 1: Human testicular cancer stained with 1E8-G6 (paraffin)

Species reactivity

Positive: human, rabbit, zebrafish.

Applications

Detection of TGF-alpha.

ELISA	Flow cytometry	Frozen sections	Paraffin sections	Western blotting
+	+	+	citrate	+

Format

Produced in tissue culture, contains no host Ig. Antibodies are affinity purified and presented in PBS with 0,02% sodium azide.

Stored at 4°C-8°C, shelf life is at least 24 months after purchase.

Dilution advice

- ELISA (solid phase: not known; tracer: 0.001-100 µg/ml for 30 min at RT).
- Flow cytometry (0,5-1,0 µg/million cells in 0,1ml).
- Immunoblotting (1-2 µg/ml).
- Immunohistology (1-2 µg/ml for 30 min at RT; staining of formalin-fixed tissues requires boiling tissue sections in 10mM citrate buffer, pH6,0 , for 10-20 min followed by cooling at RT for 20 minutes).

Positive control

Jurkat or Ramos cells. testicular carcinoma, breast cancer.

References

- Bebók, Zs, Márkus, B. And Németh, P. Breast Cancer Res.Treatm. 29: 229-235 (1994).