

Datasheet



Mouse mAb to **Myeloid cells**
Clone **BM-1**
Isotype **Mouse IgG1-κ**

Source

A BALB/c nuclei from Pokeweed mitogen stimulated human peripheral blood lymphocytes were used as immunogen.
Fusion partner: NS-1.

Specifications

BM-1 is reactive in B5 fixed, paraffin embedded tissue sections to human myeloid cells and derived malignancies. The antibody reacts with a 183 kDa cytoplasmic antigen with DNA-binding characteristics which is expressed in most myeloid precursor cells and myeloid leukemias. BM-1 is positive on myeloid precursors in bone marrow but lymph nodes are negative. Tissue granulocytes are positive as well as scattered cells in peripheral cortex and interlobular septae of adult and fetal thymus. Portal regions of fetal liver (18 weeks) are also positive.

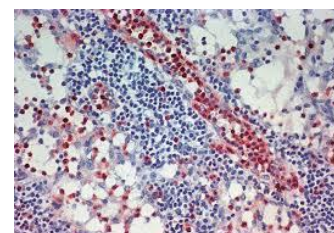


Figure 1: Human lymph node stained with BM-1 (paraffin)

Species reactivity

Positive: human.

Applications

Identification of M2 and M3 AML, of CML and CMMol and granulocytic sarcomas.

Frozen sections	Paraffin sections
+	+

Format

Produced in tissue culture, contains no host Ig. Antibodies are affinity purified and presented in PBS with 0,02% sodium azide.

Stored at 4°C-8°C, shelf life is at least 24 months after purchase.

Dilution advice

- Immunohistology (1-2 µg/ml for 30 min at RT; staining of formalin-fixed tissues better after boiling tissue sections in 10mM Citrate Buffer, pH6,0 , for 10-20 min followed by cooling at RT for 20 minutes).

Positive control

Lymph node, tonsil.

References

- Epstein, AL et al. *Blood* **70**:1124-1130 (1987).