

Datasheet



Mouse mAb to **Anti-Myeloid Specific Antigen**
Clone **BM-5**
Isotype **IgG1-κ**

Source

A BALB/c mouse was immunized with nuclei from Pokeweed mitogen stimulated human peripheral blood lymphocytes.
Fusion partner: NS-0.

Specifications

BM-5 is specific marker for human myeloid cells and an early marker of myeloid differentiation. It recognizes a nuclear and cytoplasmic antigen present in granulocytes, monocytes, and myeloid precursor cells. It also reacts with a subset of myeloid leukemia cells. BM-5 has no reactivity with any other cell type in human tissues.

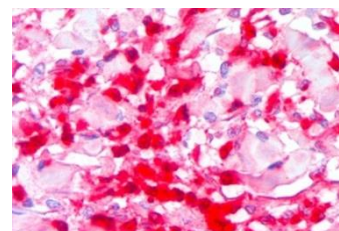


Figure 1: Nuclear and cytoplasmic staining of histiocytoma (frozen)

Species reactivity

Positive: human.

Applications

For use on frozen sections or cell suspensions.

Frozen sections	Paraffin sections
+	-

Format

Produced in tissue culture, contains no host Ig. Antibodies are affinity purified and presented in PBS with 0,02% sodium azide.

Stored at 4°C-8°C, shelf life is at least 24 months after purchase.

Dilution advice

- Immunohistology (1-2 µg/ml for 330 min at RT; an appropriate antigen retrieval method for staining of formalin-fixed tissue has not been established to date).

Positive control

Blood or bone marrow.

References

- Epstein, AL et al. *Blood* **70**: 1124-1130 (1987).
- Epstein, Alan L. and Clevenger, Charles V.: Identification of nuclear antigens in human cells by immunofluorescence, immunoelectron microscopy, and immunobiochemical methods using monoclonal antibodies. In: *Progress in Nonhistone Protein Research*, Vol. 1, Isaac Bekhor, ed., 1985, CRC Press, Boca Raton, FL, pp. 117-137.
- Murao et al, *Cancer Research* **45**: 791-795 (1985).