

Datasheet



Mouse mAb to **Erythroid Marker**
Clone **SFL23.6**
Isotype **IgG1-κ**

Source

A BALB/c mouse was immunized with fetal hepatocytes.
Fusion partner: SP-2/0.

Specifications

SFL23.6 is directed against an erythroid cell surface antigen, which is not glycophorin A. It shows a well-defined reactivity with cells of the erythroid lineage at all stages of maturation in the peripheral blood, bone marrow, and fetal liver. Non-erythroid lineages are negative by flow cytometry. SFL23.6 is positive on erythroleukemias and can be used to distinguish bone marrow nucleated erythroid precursors from malignant cells in bone marrow specimens.

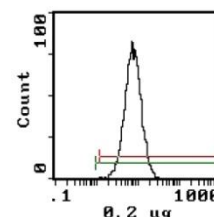


Figure 1:
Erythrocytes stained for anti-erythrocytes antibody (FACS)

Species reactivity

Positive: human.

Applications

SFL23.6 can be used to identify cells from erythroid lineage.

Flow cytometry	Frozen sections	Immunofluorescence	Paraffin sections
+	+	+	—

Format

Produced in tissue culture, contains no host Ig. Antibodies are affinity purified and presented in PBS with 0,02% sodium azide.

Stored at 4°C-8°C, shelf life is at least 24 months after purchase.

Dilution advice

- Flow cytometry (0,5-1,0 µg/million cells in 0,1 ml).
- Immunofluorescence (0,5-1,0 µg/ml).
- Immunohistology (1-2 µg/ml for 30 min at RT; an appropriate antigen retrieval method for staining of formalin-fixed tissues has not been established to date).

Positive control

Human erythrocytes, placenta.

References

- Das Gupta, A., *Blood* **66**: 522-526 (1985).