

# Datasheet



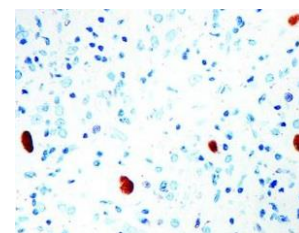
Mouse mAb to **Cytomegalovirus p65**  
Clone **CMV-224**  
Isotype **IgG1-κ**

## Source

A BALB/c mouse was immunized with Recombinant CMV-p65 protein.  
Fusion partner: NS-1.

## Specifications

Ten to forty percent of the patients with acquired immunodeficiency syndrome (AIDS) develop cytomegalovirus (CMV) infections. In some patients with AIDS, CMV is detected in the bronchoalveolar lavage fluid (BALF), urine, and other specimens, even when there are no symptoms of CMV disease. An indicator of active CMV infection is needed to facilitate the diagnosis of CMV disease in patients with AIDS or HIV infection. CMV p65 antigen was detected in the leukocytes of both the peripheral blood and BALF during the early phase of CMV disease.



**Figure 1:** Human lung stained for CMV (frozen)

## Species reactivity

Positive: CMV.

## Applications

Detection of CMV, including in BALF.

ELISA	Flow cytometry	Frozen sections	Immunofluorescence
+	+	+	+

## Format

Produced in tissue culture, contains no host Ig. Antibodies are affinity purified and presented in PBS with 0,02 % sodium azide.

Stored at 4°C- 8°C, shelf life is at least 24 months after purchase.

## Dilution advice

- ELISA (solid phase: 0,1-100 µg/ml; tracer: 0,001-100 µg/ml for 30 min at RT).
- Flow cytometry (0,5-1,0 µg/million cells in 0,1 ml).
- Immunofluorescence (0,5-1,0 µg/ml).
- Immunohistology (1-2 µg/ml for 30-60 minutes at RT; acetone or paraformaldehyde fixed only; information on a suitable antigen retrieval method for staining of formalin-fixed tissues is unavailable to date).

## Positive control

CMV-infected cells or tissues.

## References

- Hanabusa H, et al, *Kansenshogaku Zasshi*. **68(9)**: 1105-12 (1994).