

Datasheet



Mouse mAb to **HPV-16 E6**
Clone **HPV-13E2**
Isotype **IgG1-κ**

Source

A BALB/c mouse was immunized with HPV-16 E6 synthetic peptide.
Fusion partner: X63-Ag8-653.

Specifications

Monoclonal antibody HPV-13E2 reacts with HPV-16 E6 peptide (MHQKRTAMFQDPPQERPRKLPQLC). Infection with specific types of HPV has been associated with an increased risk of developing cervical neoplasia. HPV types 6 and 11 have been associated with relatively benign diseases such as genital warts but types 16 and 18 are strongly associated with cervical, vaginal, and vulvar malignancies.

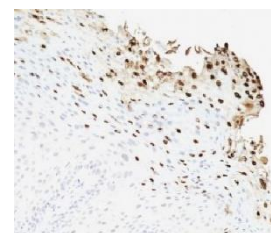


Figure 1: Human cervix stained for HPV-16 E6 (frozen)

Species reactivity

Positive: human.

Applications

Identification of HPV-16 E6.

ELISA	Frozen sections	Paraffin sections
+	+	-

Format

Produced in tissue culture, contains no host Ig. Antibodies are affinity purified and presented in PBS with 0,02 % sodium azide.

Stored at 4°C- 8°C, shelf life is at least 24 months after purchase.

Dilution advice

- ELISA (solid phase: not known; tracer: 0,001-100 µg/ml for 30 min at RT).
- Immunohistology (1-2 µg/ml for 30 min at RT; an appropriate antigen retrieval method for staining of formalin-fixed tissues has not been established to date).

Positive control

HPV 16 E6 synthetic peptide or recombinant protein.

References

- Beldermann, Frank: Entwicklung monoklonaler Antikörper gegen das frühe Virusprotein E6 des humanen Papillomavirus HPV-16, Thesis, University of Heidelberg, Germany (1995).